

FlexKreteTM
Technologies
A div of Protective Products, Inc.

**Several Times
Stronger than Concrete**

**Trowel to a
Feather-Edge**

**Fill as Deeply as
Needed**

Cure @ 0°F in 1 Hour

**Chemically and
Physically
Bonds Broken Concrete**

Waterproofs

Chemical Resistant

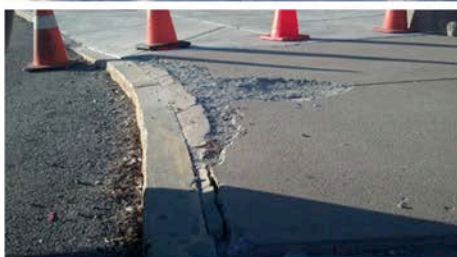
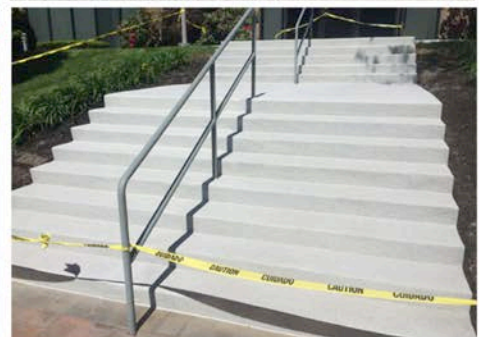
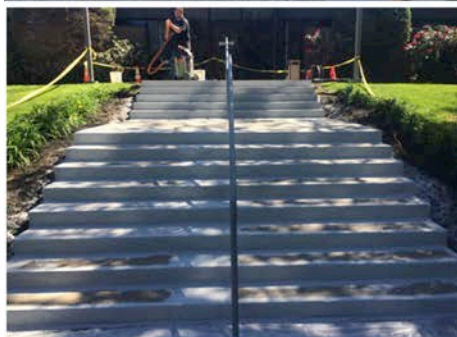
Very Low Odor

**Colors Available,
Gray & Clear Standard**

BEFORE



AFTER



For information:

SealPro, LLC

150 Dow Street, Suite 316C
Manchester, NH 03101

SPALLS • DECKS • DRIVEWAYS • STAIRS

(603) 669-2243 • (800) 732-5776 X202

www.sealproweb.com



CONCRETE REPAIR SYSTEM

GENERIC TYPE:

Advanced, thermoset vinyl polymer.

RECOMMENDED USAGE:

- Repair pot holes and broken concrete.
- Repair spalls in concrete.
- Feather edge, or use full depth.
- Rebuild broken curbs and platforms .
- Restore integrity of distressed concrete.
- Bridge deck repairs and slabs.
- Parking lots.
- Parking decks .
- Floors, docks & ramps.
- Non-skid, coating for floors, steps & walkways.
- Driveway and sidewalk renovations.
- Rebuild stairways.
- Control joints.
- Equipment bases.
- Anchor bolts and posts .
- Level concrete.

CHEMICAL RESISTANCE GUIDE:

(Use FlexKrete 102CR)

EXPOSURE	IMMERSION	SPLASH & SPILL
ACIDS	GOOD	EXCELLENT
ALKALIES	GOOD	EXCELLENT
PETROLEUM	GOOD	GOOD
SALTWATER	EXCELLENT	EXCELLENT
WATER	EXCELLENT	EXCELLENT

NOTE: For specific harsh chemical environments, Contact FlexKrete Technologies or your sales rep.

ORDERING INFORMATION:**Shipping Weight:**

Wt. Per Gallon @ 77°F / 9 lbs.

PACKAGING :

Available in 5 gallon units.

PHYSICAL DATA:

Solids by wt: approx . (@77°F)	99%
Solids by vol: approx. (@77°F)	98%
Specific Gravity @ 77°F	1.08
Viscosity@ 77 F	180-250 cps
Flash Point: (ATMS-D-93, Open Cup)	141°F
Pot Life with 80% aggregate:	
@77°F, approx.	20 min.
@100°F, approx.	12 min.
Pot Life without aggregate:	
@77°F, approx.	13 min.
@100°F, approx.	7 min.
Linear Shrinkage (unfilled)	1.1%
Tensile Modulus (ASTM D 790)	182,000 psi
Tensile Strength (ASTM D 638)	3,530 lb/in ²
Flexural Strength (ASTM D 790)	7,340 lb/in ²
Flexural Modulus (ASTM D 790)	390,000 psi
Elongation% (ASTM D 638)	30%
Water Absorption (ASTM D 570)	0.64%
Compressive Strength	>10,000 psi
Hardness -Shore D (ASTM D 2240)	79
Shelf Life:	6 mos.
VOC	0
TEMPERATURE LIMITS:	
Continuous	175° F
Intermittent	220° F
Cures@	35° F

COVERAGE

1 Gal. FlexKrete™ + 4 Gal. Sand=

- 128 SF@ 1/ 16" Average Thickness
- 64 SF@ 1/8" Average Thickness
- 32 SF@ 1/4" Average Thickness
- 16 SF@ 1/2" Average Thickness
- 8 SF @ 1" Average Thickness

For roll and broadcast repairs, approx. 50-100 sf per gallon, depending on the type and porosity of the substrate and the size of the aggregate used .

SEALPRO, LLC

150 Dow Street, Suite 316C | Manchester, NH 03101

(603) 669-2243 • (800) 732-5776 X202

www.sealproweb.com